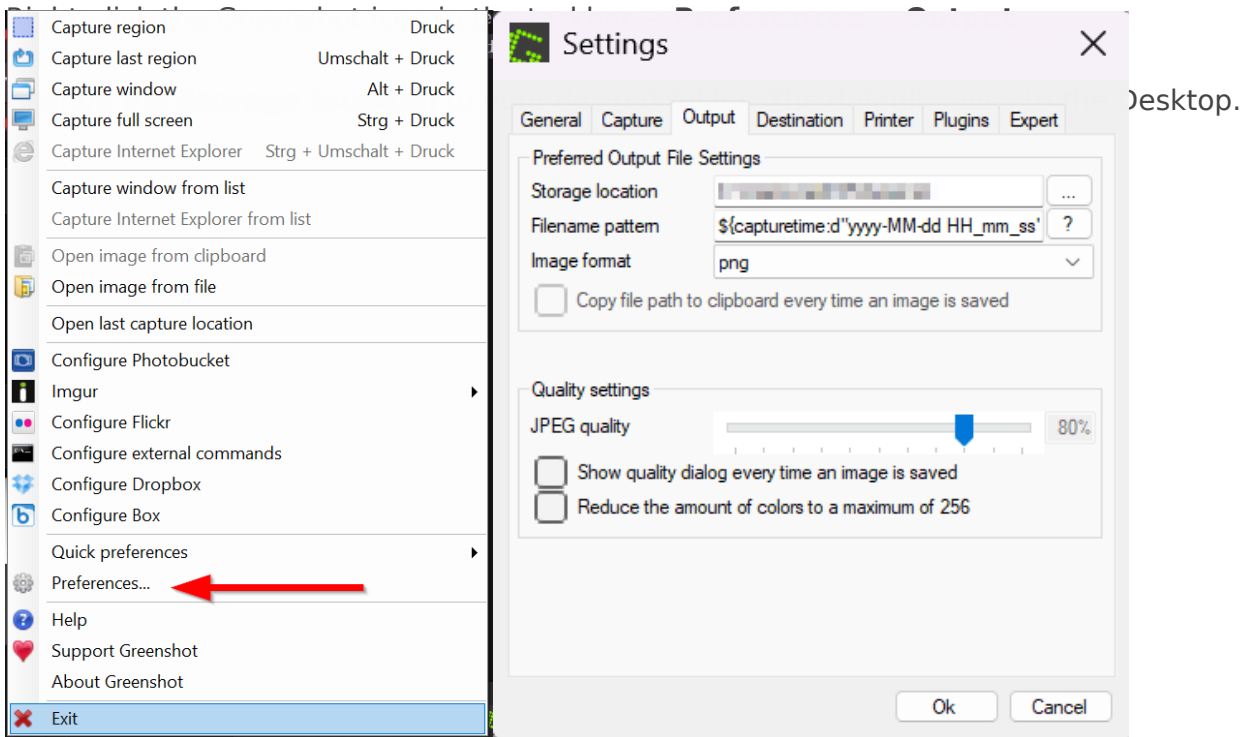


Greenshot Configuration

Download from:

<https://getgreenshot.org/>

Storage Location



Destinations

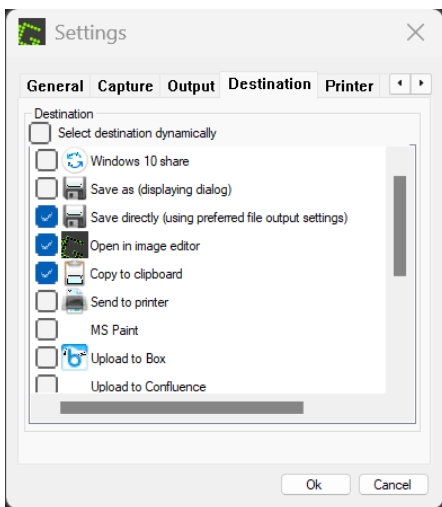
Navigate to the **Destination** tab and configure as follows:

Uncheck:

- `Select destination dynamically` — disables the destination dialog that would otherwise appear after every screenshot

Check as needed:

- `Save directly` — saves the screenshot directly to the configured storage location
- `Open in image editor` — opens the screenshot in Greenshot's editor immediately (useful if you annotate screenshots frequently)
- `Copy to clipboard` — copies the screenshot to the clipboard instantly



Tips

Straight arrows: Hold `Shift` while drawing an arrow to constrain it to a straight line.

Freeing Up the Print Key

By default, Windows may intercept the `Print` key. To hand it over to Greenshot:

Settings → **Bluetooth & devices** → **Keyboard** → disable **"Use the Print key to open..."**

Bluetooth & devices > Keyboard

Keyboard character repeat

Repeat delay and repeat rate preview

Type to preview your changes.




Keyboard character repeat delay

Short  Long




Keyboard character repeat rate

Slow  Fast

Shortcuts and hotkeys



Customise Copilot key on keyboard

Choose what happens when you press the Copilot key or Windows logo key  + C

Search



Use the Print screen key to open screen capture

Off



Related settings



Keyboard accessibility

Sticky, Filter, and Toggle keys, on-screen keyboard



Text input personalisation

Touch keyboard, voice typing, emoji and more, input method editor



Dynamic Lighting

Connected devices, effects, app settings



Spelling, typing, & keyboard settings



Revision #2

Created 2026-03-11 07:49:45 UTC by syu

Updated 2026-03-11 08:51:10 UTC by syu